

SLUSH PUPPIE®

FOR USE WITH
ALL DOMESTIC
SLUSH PUPPIE® SYRUPS



Slushie Machine

INSTRUCTIONS FOR USE

Product Ref: 300095 0808 V2. Power Specification: 220-240V~50/60Hz, 20W.

CONTENTS

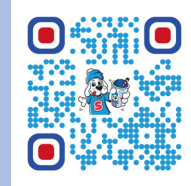
Safety Information	2
Before You Begin	3
– Remove Packaging	
– What's in the box	
– What you will need	
– Tips on using your SLUSH PUPPIE® Machine	
Assembly	4-5
Using the Machine	5-6
– Making SLUSH PUPPIES®	
– Dispensing SLUSH PUPPIES®	
Storage and Maintenance	7
– Cleaning and Care	
– Storage	
– Servicing	
– Troubleshooting	
– Helpful Hints and Tips	
– Technical Specification	



Watch a Video

For top tips and guidance on making perfect SLUSH PUPPIES® a video can be found at:

fizzcreations.com/slush-puppie-help
or simply scan here.



SAFETY INFORMATION

PLEASE READ THESE INSTRUCTIONS CAREFULLY BEFORE ASSEMBLING AND USING YOUR SLUSH PUPPIE® MACHINE.
WE RECOMMEND YOU KEEP THESE INSTRUCTIONS IN A SAFE PLACE FOR FUTURE REFERENCE.

- ✗ Never use any attachments or tools not included with the SLUSH PUPPIE® Machine. The use of these attachments may cause, fire, electric shock or injury.
- ✗ Never use the SLUSH PUPPIE® Machine for anything other its intended use. This appliance is for indoor use only. This appliance is intended to be used in household and similar applications: staff kitchen areas in shops, offices and other working environments; farm houses; by clients in hotels, motels and other residential type environments; bed and breakfast type environments.
- ✗ Never allow children under 8 years of age to use the SLUSH PUPPIE® Machine, close supervision is necessary when this appliance is used by children.
- ✗ Never let the power cord hang over the edge of the worktop, touch hot surfaces, become knotted, trapped or pinched.
- ✗ Never place on or near a heat source.
- ✗ Never leave the SLUSH PUPPIE® Machine unattended during use.
- ✗ Never touch the exposed metal parts of the appliance during use as they will become very hot.
- ✗ Never operate the SLUSH PUPPIE® Machine by means of an external timer or separate remote control system.
- ✗ Never immerse the power cord or plug into water or any other liquid. This is to protect against electric shock.
- ✗ Children shall not play with the appliance
- ✗ Cleaning and user maintenance shall not be made by children unless they are older than 8 and supervised.
- ✗ Keep the appliance and its cord out of reach of children less than 8 years.
- ✓ Always ensure the SLUSH PUPPIE® Machine is only used by a responsible adult or by children over 8 years of age under supervision.
- ✓ Always use the SLUSH PUPPIE® Machine on a stable level surface.
- ✓ Always ensure that hands are dry before handling the plug or switching on the SLUSH PUPPIE® Machine.
- ✓ Always unplug this unit when not in use and before cleaning.
- ✓ Always allow the SLUSH PUPPIE® Machine to fully cool down before cleaning or storing.
- ✓ Always carry out regular checks on the SLUSH PUPPIE® Machine and power cord.
- ✓ This appliance is for domestic use only.

In order to avoid hazard, should there be any sign of damage, do not attempt to use or repair. If the supply cord is damaged, it must be replaced by the manufacturer, its service agent or similarly qualified persons in order to avoid a hazard. The SLUSH PUPPIE® Machine has no user serviceable parts.

This appliance can be used by children aged from 8 years and above and persons with reduced physical, sensory or mental capabilities or lack of experience and knowledge if they have been given instruction concerning safe use of the appliance and understand the hazards involved and are supervised during use.

Switch off the appliance and disconnect from the power supply before assembling, disassembling, cleaning, changing accessories or if left unattended.

Electrical Safety

PLEASE READ THESE INSTRUCTIONS THOROUGHLY BEFORE USING THE SLUSH PUPPIE® MACHINE
OR CONNECTING IT TO THE MAINS ELECTRICITY SUPPLY.

- There are no user serviceable parts inside the SLUSH PUPPIE® Machine. In order to remove hazard always refer servicing to qualified service personnel.
- Before switching on, make sure that the voltage of your electricity supply is the same as that indicated on the SLUSH PUPPIE® Machine's rating plate. Connecting it to any other power source may cause damage.
- The power cord and plug of the SLUSH PUPPIE® Machine are not replaceable by the user. If either are damaged, they should be replaced by suitably qualified personnel only.
- Do not allow the SLUSH PUPPIE® Machine to be exposed to rain or moisture during use or storage.

BEFORE YOU BEGIN

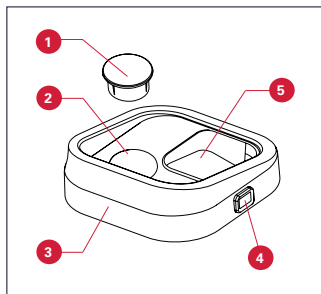
Remove Packaging

Carefully remove all packaging material and promotional labels from the SLUSH PUPPIE® Machine.

What's in the box

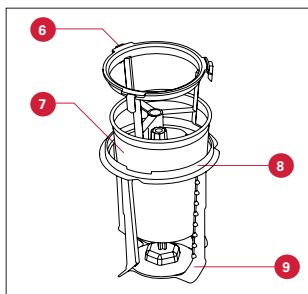
In the box you will find...

Canister Lid



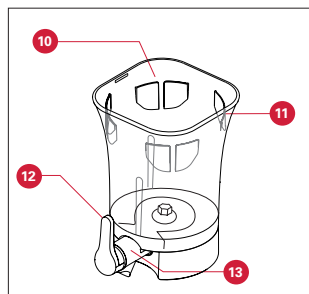
- 1 Ice/Salt Inlet Cap
- 2 Ice/Salt Inlet
- 3 Canister Lid
- 4 Side Latch
- 5 Syrup Inlet

Ice Canister



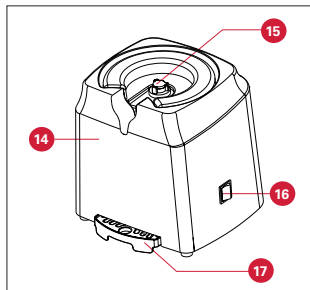
- 6 Ice Canister Cage with Ice Paddle
- 7 Locking Clips
- 8 Ice Canister
- 9 Ice Paddle Assembly
- 9 SLUSH PUPPIE® Blades

SLUSH PUPPIE® Container



- 10 SLUSH PUPPIE® Container
- 11 Locking Notch
- 12 Tap Handle
- 13 Tap

Motor Base



- 14 Motor Base
- 15 Drive Sprocket
- 16 Mix/Off/Dispense Switch
- 17 Drinks Tray

Canister Lid

Motor Base



Ice Canister

SLUSH PUPPIE® Container

What you will need...

Once you've chosen a flavour, make the SLUSH PUPPIE® syrup mixture in a jug that will hold at least 1 litre of mixture. Carefully follow the instructions on the syrup bottle. **To make 1 litre of SLUSH PUPPIE®, mix 840ml of water to 160ml syrup.** This is a guide and should your mixture not produce the desired slush, you can add more water or syrup as necessary. If the mixture is not freezing enough to produce slush, it is likely you will need more water. If the mixture is becoming too solid it is likely you will need more syrup.

Ice Cubes

Make sure you have enough ice cubes on hand to fill the Ice Canister.

Water

At least 80ml of cold water.

Salt

We recommend you have enough salt to fill 7 Ice/Salt Inlet Caps. This is equivalent to approximately 170g

NOTE: The salt will not be consumed; it is used to stop the ice mix from rapidly freezing.

Cups

Use your own, or purchase the SLUSH PUPPIE® Cups (266ml).



TIP: Using Your SLUSH PUPPIE® Machine

Your SLUSH PUPPIE® Machine can make a maximum of 1 litre of SLUSH PUPPIE® mix in one go.

PLEASE NOTE that the SLUSH PUPPIE® mix will reduce in volume when the slush starts to form.

DO NOT exceed the maximum capacity of 1 litre of liquid in the SLUSH PUPPIE® Container as indicated by the 'Max Fill' level on the front of the container. This will result in the liquid overflowing into the Ice Canister, mixing with the salt and ice.

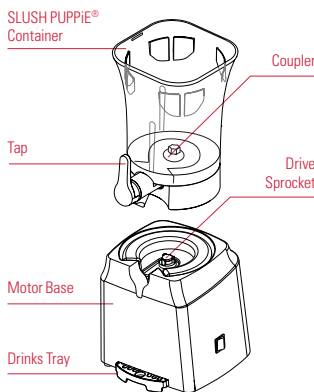
ASSEMBLY

It's almost time for some SLUSH PUPPIES®.

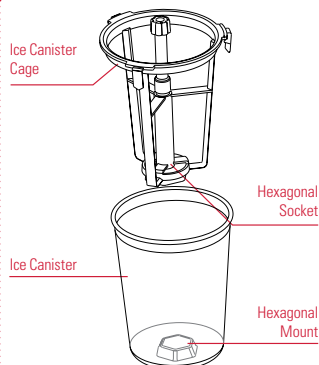
First, let's get the SLUSH PUPPIE® Machine ready for action...



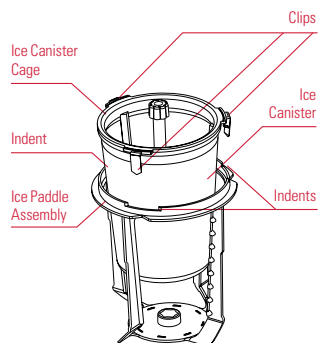
DO NOT plug the power cord into the mains electrical supply until the SLUSH PUPPIE® Machine is fully assembled. Before using for the first time, clean any removable parts with a soft sponge and washing up liquid. Thoroughly rinse with clean water and dry.



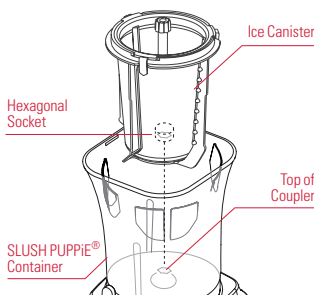
1 Insert the SLUSH PUPPIE® Container onto the Motor Base. Make sure the Coupler on the SLUSH PUPPIE® Container is correctly aligned with the Drive Sprocket and slots firmly into position. The Tap should sit directly above the Drinks Tray.



2 Insert the Ice Canister Cage into the Ice Canister. Make sure the Hexagonal Socket on the Ice Canister Cage aligns with the Hexagonal Mount in the Ice Canister.

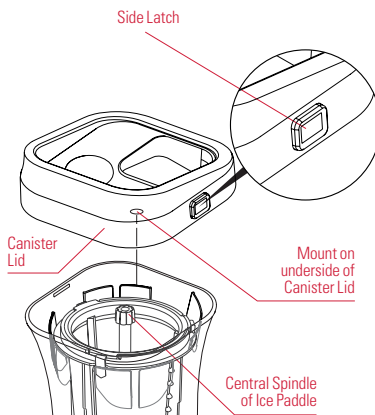


3 Insert the Ice Canister complete with Ice Canister Cage into the Ice Paddle Assembly so that the Clips line up with the 3 Indents. Make sure the Ice Canister is correctly seated. Carefully push each Clip into place. A loud 'click' will indicate each Clip is securely in position.

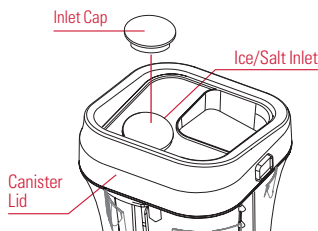


4 Insert the assembled Ice Canister into the SLUSH PUPPIE® Container. Make sure the Hexagonal Socket on the Ice Canister aligns with the top of the Coupler in the SLUSH PUPPIE® Container and slots firmly into place.

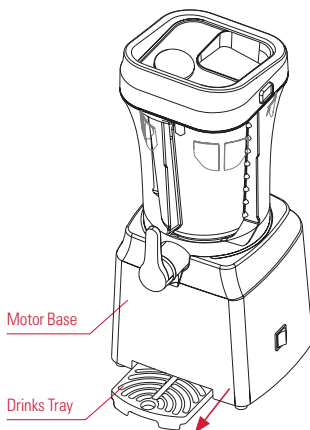
5 Fit the Canister Lid into place. Make sure the SLUSH PUPPIE® logo is at the front and the text displaying FRONT on the Canister Lid is facing forwards. Place the canister lid so it lines up with the top of the canister. Push down until you hear a click on the side latches, securing the canister lid in place. To remove, push the side latches in to release the lid.



ASSEMBLY



- 6 Push the Inlet Cap into position in the Ice/Salt Inlet.
- 7 Carefully pull the Drinks Tray out from the Motor Base until it is fully extended.



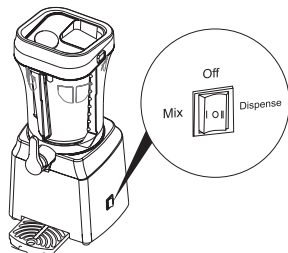
USING THE MACHINE

Making SLUSH PUPPIES®
Are you ready? Feeling thirsty?
Let's make some SLUSH PUPPIES®!

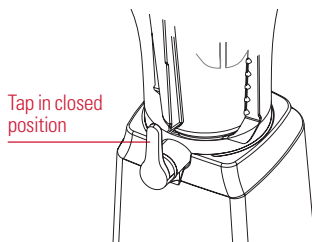


Watch a Video

For top tips and guidance on making perfect SLUSH PUPPIES® a video can be found at: fizzcreations.com/slush-puppie-help or simply scan here.



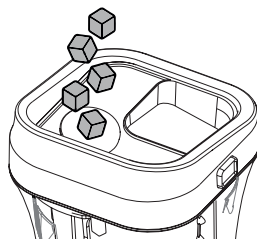
- 1 Plug the SLUSH PUPPIE® Machine into an appropriate mains power supply and check that it is switched on at the socket.
- 2 Press the Mix/Off/Dispense switch to position I (Mix).



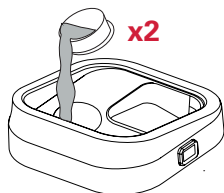
- 3 Ensure the Tap is in the closed position.



IMPORTANT
 It is very important that your SLUSH PUPPIE® Machine is working before you add ice; otherwise the motor or blade could freeze.



- 4 Remove the Inlet Cap and half fill the Ice Canister with ice through the Ice/Salt Inlet. This is indicated by the ICE and SALT marker on the Canister Lid.



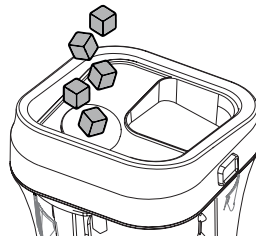
- 5 Pour 2 inlet caps of salt into the Ice/Salt Inlet.



IMPORTANT
 Add salt to the Ice Canister only. The salt will not be consumed; it is used to stop the ice mix from rapidly freezing.



- 6 Pour 40ml of water into the Ice Canister through the Ice/Salt Inlet.



- 7 Fill the rest of the Ice Canister with ice cubes through the Ice/Salt Inlet.

Note: The ice level should be at least 3cm below the rim of the Ice Canister.

USING THE MACHINE



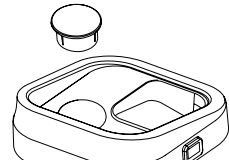
- 8 Pour a further 3 Inlet Caps of salt into the Ice Canister through the Ice/Salt Inlet.



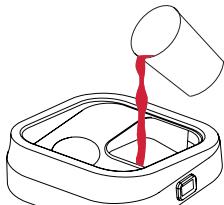
IMPORTANT
Add salt to the Ice Canister only. The salt will not be consumed; it is used to stop the ice mix from rapidly freezing.



- 9 Pour a further 40ml of water into the central Ice Canister.



- 10 Re-fit the Inlet Cap into position on the lid.



- 11 Slowly pour your SLUSH PUPPIE® syrup mixture through the Syrup Inlet at the rear right of the Canister Lid. This is indicated by the BEVERAGES HIGH IN SUGAR CONTENT ONLY marker on the Canister Lid. Not suitable with carbonated beverages.



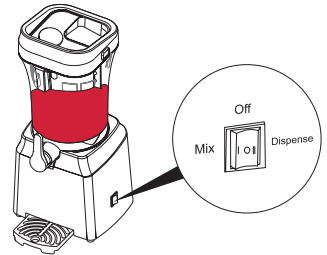
IMPORTANT
DO NOT exceed the 1 litre limit as shown by the Max Fill line on the SLUSH PUPPIE® Container.

- 12 Leave the SLUSH PUPPIE® Machine running for approximately 15-25 minutes. Do not leave the SLUSH PUPPIE® Machine unattended or exceed the running time (40 minutes). The amount of time until the desired consistency is reached will depend on the ambient temperature.

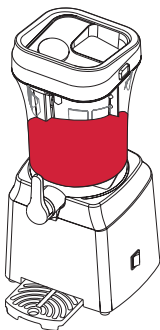
- 13 When the mixture level drops add more ice cubes to the Ice Canister to a level no higher than 3cm from the rim of the Ice Canister. Do not fill the ice to the top of the canister as this cools the Ice Canister too much; add a couple of ice cubes at a time and leave a minute or two before adding more ice cubes. Add 2 or 3 Inlet Caps of salt to the Ice Canister and the equivalent amount of water.



IMPORTANT
Add salt to the Ice Canister only. The salt will not be consumed; it is used to stop the ice mix from rapidly freezing.



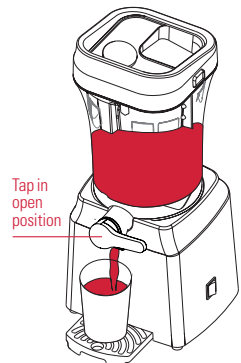
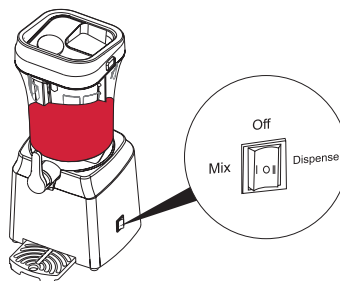
Note: If the Ice Canister jams, simply turn the machine off and wait for the ice to melt around the canister, enough to allow the blades to rotate again. Once this has melted enough, add ice again, slowly and regularly to cool the canister enough to make slush.



- 14 To create perfect SLUSH PUPPIES®, wait until peaks form in the SLUSH PUPPIE® mixture before dispensing.

Note: After using the SLUSH PUPPIE® Machine wait at least 15 minutes before using again. This will allow the motor to cool.

Dispensing SLUSH PUPPIES®



- 1 Press the Mix/Off/Dispense switch to Position II (dispense).
- 2 Place a cup or glass onto the Drinks Tray and turn the Tap Handle clockwise so that it is in the open position. The mixture will start to pour.
- 3 To stop dispensing, turn the Tap Handle anti-clockwise.
- 4 When you have finished, press the Mix/Off/Dispense switch to Off (Position O).

STORAGE AND MAINTENANCE

Cleaning and Care

We recommend cleaning the Ice Canister straight after use. There is a large amount of salt used when making SLUSH PUPPIE[®]. This salt is not consumed and prevents freezing.

If the salt is left in the Ice Canister for a long period of time it will corrode the metal. Please refer to the steps below:

To clean your SLUSH PUPPIE[®] Machine:

- 1 Unplug the SLUSH PUPPIE[®] Machine from the mains electricity supply and allow it to cool completely.
- 2 Remove all detachable parts.
Note: When removing the Canister Lid, press the Clips on the sides inwards to release the Canister Lid.
- 3 Clean the detachable, non-electronic parts in lukewarm water with some washing-up liquid and rinse them under a tap.
- 4 Clean the outer surface of the SLUSH PUPPIE[®] Machine with a soft damp cloth.
- 5 After each use please clean the Ice Canister thoroughly. The Ice Canister is sturdy but the metal is purposely designed to be thin. Salt must not be left in or on the Ice Canister after use as it can cause corrosion. The ultra-thin Ice Canister allows the freezing cold temperatures to transfer to the outer wall, this design helps you to make perfect SLUSH PUPPIE[®].



IMPORTANT

Before cleaning your SLUSH PUPPIE[®] Machine, make sure the machine is turned off with the Mix/Off/Dispense switch set to Off (Position 0).



IMPORTANT

DO NOT immerse the Motor Base in water or any other liquids.



IMPORTANT

DO NOT use coarse or abrasive cleaners or steel wool to clean the SLUSH PUPPIE[®] Machine.



IMPORTANT

Never spray or apply cleaning products directly onto the SLUSH PUPPIE[®] Machine. If necessary, apply cleaner to a soft cloth instead.



IMPORTANT

DO NOT use a dishwasher to clean your SLUSH PUPPIE[®] Machine.

Storage

To safely store your SLUSH PUPPIE[®] Machine:

- 1 Make sure the SLUSH PUPPIE[®] Machine is turned off with the Mix/Off/Dispense switch set to Off (Position 0).
- 2 Unplug the SLUSH PUPPIE[®] Machine from the mains electricity supply.
- 3 Make sure the SLUSH PUPPIE[®] Machine has completely cooled and is clean before storing.
- 4 Store the SLUSH PUPPIE[®] Machine in its original packaging in a clean dry place. Do not allow the SLUSH PUPPIE[®] Machine to be exposed to rain or moisture during use or storage.

Servicing

If you drop or damage your SLUSH PUPPIE[®] Machine do not use it until it has been examined by an authorised service centre or appliance technician. Servicing must only be carried out by qualified service personnel.

Troubleshooting

If your SLUSH PUPPIE[®] Machine is not working as expected you may find a simple solution listed below:

Whats is happening?	What it could be
The motor is not spinning	The blade may have become frozen. Turn the SLUSH PUPPIE [®] Machine off, move the frozen blade and restart the machine.
The mixture is not freezing or chilling	The Ice Canister may not be cold enough. Add more ice and salt. The mixture added is too warm. We recommend chilling the syrup mixture for at least 2 hours, ideally overnight before use. For best results, freeze the Ice Canister for 1 hour before use.
If the SLUSH PUPPIE [®] Machine is getting too cold too quickly	Too much ice is being used. When filling the Ice Canister leave a gap of 3cm from the top of the ice to the canister rim.
If the Canister Lid comes off	Too much ice is being used. When filling the Ice Canister leave a gap of 3cm from the top of the ice to the Ice Canister rim.
If your SLUSH PUPPIE [®] Machine is not making slush	This could be due to salt falling into the wrong compartment. Make sure salt is only poured into the Ice/Salt Inlet indicated by the ICE AND SALT marker on the Ice Canister Lid.

Helpful Hints and Tips

- Do not add thick liquids or solids to the Slush mix.
- Do not operate the SLUSH PUPPIE[®] Machine for longer than required and do not use for longer than 40 minutes of continuous use.
- Consume SLUSH PUPPIES[®] as soon as they have been served.
- Slush mixtures with higher sugar content will reach the desired consistency more quickly than mixtures with lower sugar content.
- When preparation begins always start with liquid mixtures and not frozen mixtures.
- Follow the instructions on the syrup bottle carefully. We recommend you use the SLUSH PUPPIE[®] branded syrup.
- You can use any drink with a high sugar level in your SLUSH PUPPIE[®] Machine such as fresh orange juice.
- If you are not using official SLUSH PUPPIE[®] branded syrup please ensure your mixture has a high sugar content which helps with the reaction to create the slush. If the mixture is not freezing sufficiently to produce slush, there is too much sugar in the mixture and it will need to be diluted. If the mixture is becoming too solid, it is likely you will need more sugar in your mixture.
- Occasionally the motor will slow down during operation when the ice starts to build up. This is a protection measure by the motor to prevent itself from burning out under stress and is normal. If the motor slows in operation it is proof that your Slushie Machine is working perfectly!



WARNING!

This is not a toy. Wash before first use. Not suitable for dishwasher use. Remove all packaging before use. Unplug before cleaning. Do not immerse electrical parts in water or any other liquid. Keep out of reach of children under 8 years of age. Indoor use only. Read the instructions carefully before use and retain this information for future reference.



WEEE Statement - Electric and Electronic devices as well as batteries must not be disposed of with household waste. For more information about where you can drop off your waste product for recycling please contact your local authority

Need help?

For Customer Service contact:
sales@fizzcreations.com



©2024 SLUSH PUPPIE®

Technical Specification

Voltage: 220–240 V 50-60Hz

Power: 20 Watts

Capacity: 1 litre



6 Commerce Way, Lancing,
BN15 8TA, UK
Distributed in the EU
by Fizz Creations GmbH
Stadtweide 17, Emmerich,
46446, DE
www.fizzcreations.com
© 2024 Fizz Creations Ltd.
All rights reserved.

UK Ltd. & GmbH



300095 FIZZ-UK-0808-V2 Made in China